



# VESTA

## Domestic smoke alarm detector

- **AFNOR certification**
- **Designed for private homes monitoring**

**VESTA helps protect you and your home 24 hours a day. It has been specially designed for monitoring private homes (houses, flats, mobile homes, caravans and camper vans).**

**Whenever smoke is detected, an audio alarm is triggered.**

**VESTA is an optical smoke detector that operates using the Tyndall effect. It analyses the atmosphere by reflecting light of smoke particles.**

**In particular it detects cold, visible smoke (with large particles ranging from 0,3µm to 2µm).**

**It runs with a battery and emits a modulated sound (compatible with the evacuation signal specified in the ISO8201 standard) when it detects smoke.**

**DAAF-REL is an optional board available that makes available one relay to repeat the information of alarm and to interface other fire detection equipments (certified EN14604).**

**DAAF-INTER is an optional board available allowing to connect one or more VESTA in a 2 wire network**



### Main characteristics

- Smoke detection
- Photoelectric scattering (Tyndall effect)
- Standard modulated sound
- Standby flashing led
- Optional board1 relay for alarm repetition
- Optional 2 wires network board

<b>Power supply specification</b>	
Main supply voltage	6,5Vdc to 9Vdc
Nominal main supply voltage	9Vdc
Quiescent current (9Vdc)	4µA to 5,5µA + 6,5µA average (500mA/105µs each 8s)
Alarm current (9Vdc)	11mA ± 2mA
Fault current (9Vdc)	Same as quiescent current
<b>Mechanical characteristics</b>	
Unit weight	185g
Unit dimensions (in mm)	H:54 D:120
Unit row material	ABS
Unit colour	Off white
Protection class	IP32
Mounting	2 screws Ø 3,5mm
<b>Climatic characteristics</b>	
Operating temperature	0°C to +55°C
Storage temperature	+10°C to +50°C
Operating relative humidity	≤ 93%
Storage relative humidity	≤ 85%
<b>Acoustic characteristics</b>	
Sound power in alarm	> 93dB @ 1m
Sound power in fault	> 70dB @ 1m



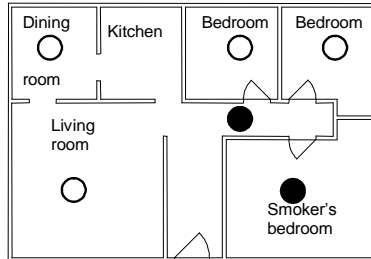
# VESTA

## Domestic smoke alarm detector

### MOUNTING

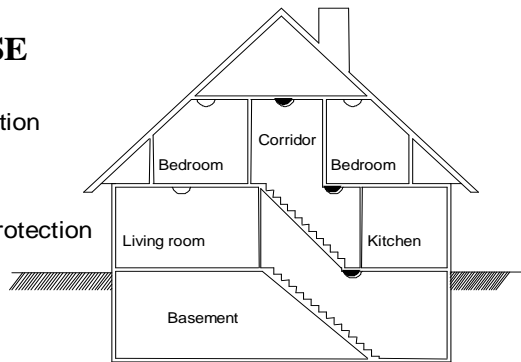
#### FLAT

- Basic protection
- Enhanced protection



#### HOUSE

- Basic protection
- Enhanced protection



#### Do not install the detector:

- Less than 1m away from heating, cooling or ventilation ducts. Any smoke may be drawn away or diluted.
- In a spot where the temperature may fall below 0°C or rise above +50°C, as there would be a risk of the detector operating poorly as a result.
- In a location where there is a risk of condensation forming. Bathrooms and laundry rooms should be avoided.
- In places such as poorly-ventilated kitchens or garages, where smoke may be released and cause false alarms.
- In spots that are too dusty.

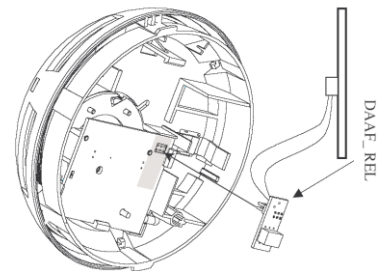
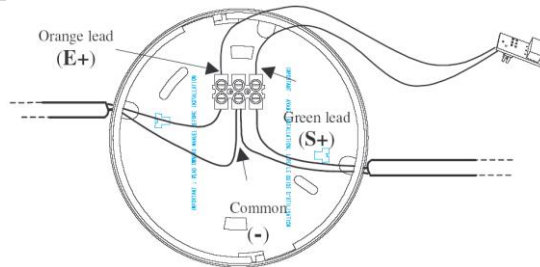
#### For optimal protection:

Place a detector in each room.

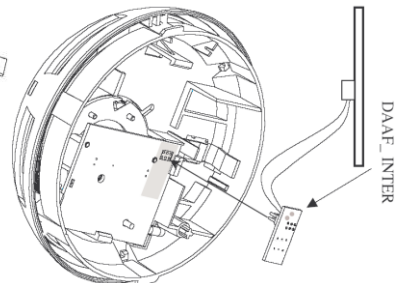
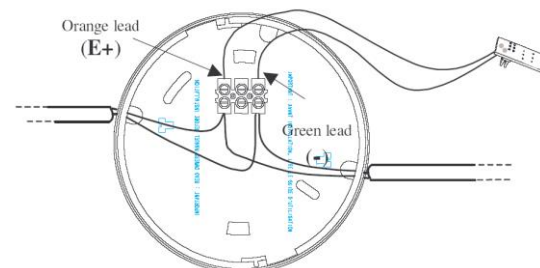
#### For basic protection:

- Place one detector on each floor.
- Place a detector near sleeping areas (for instance in the corridor leading to bedrooms; with corridors in excess of 10m long, place a detector at each end).
- Place a detector in each bedroom belonging to a smoker.

#### Base and detector connection for DAAF-REL Optional board



#### Base and detector connection for DAAF-INTER Optional board



#### Mobile homes:

For recent models of mobile homes, designed with good thermal insulation, install detectors on the ceiling. For poorly-insulated mobile homes, a thermal barrier may form in the ceiling. In this event it is preferable to install the detector on a wall.

#### REFERENCE DESCRIPTION

VESTA	Domestic smoke alarm detector with battery
DAAF REL	Plug in card with NO contact for general alarm repetition
DAAF INTER	Plug in card for 2 wires interconnection between 2 or more VESTA

